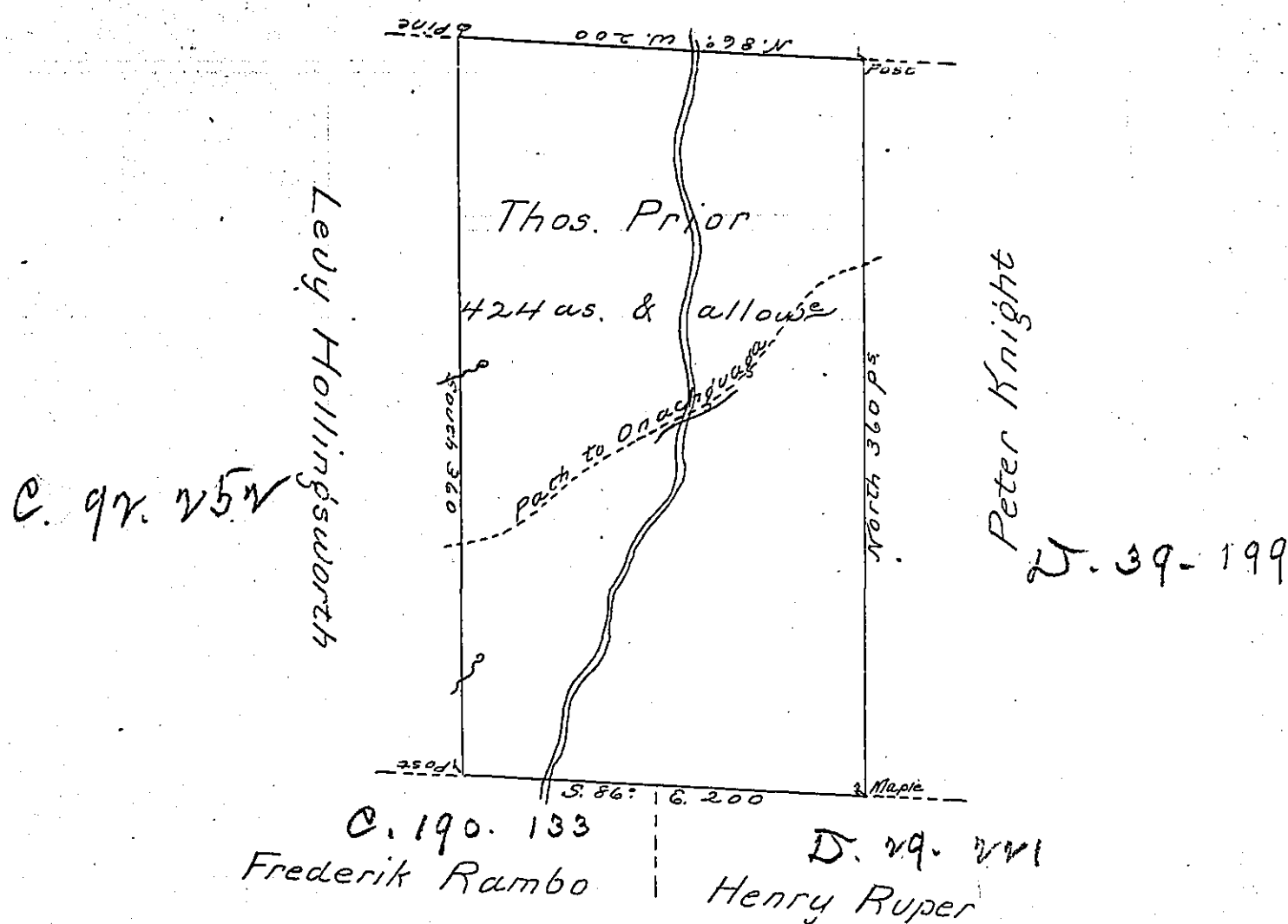


State of New York



A Draught of a tract of land called
 Situate joining the New York line including the
 Onaquaga Path & joining Land survd. for Peter
 Knight & others in Northumberland County containing
 four hundred & twenty four acres & allowe of Six
 pcent for road - &c. Survd. for Thos. Prior the 11 Day of
 (o.b.l.) tem^r 1784 in pursuance of a warrant dated the 2d
 day of July 1784 by Wm. Gray D.S.

To John Lukens Esqr.)
 Survr. Genl.)

IN TESTIMONY that the above is a copy of the original remaining on file in
 the Department of Internal Affairs of Pennsylvania, made
 conformably to an Act of Assembly approved the 16th day of
 February, 1833, I have hereunto set my Hand and caused
 the Seal of said Department to be affixed at Harrisburg,
 this sixth day of August 1901

James W. Latta
 Secretary of Internal Affairs.